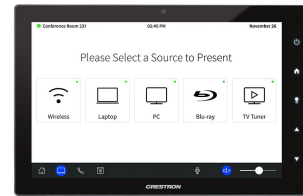


Video Services Terminology

Touch Screen Control

Larger systems benefit from a separate control system. This enables the end-user to control all portions of the system, from the audio volume to the projector on/off and inputs to the projector screen up/down. The touch screen is available in many sizes and can be a stand-alone unit or built into the wall or cabinet. Another advantage is that multiple components can be controlled with one button push; for example, the start button could turn on the audio system, the projector, lower the screen, and dim the lights.



Touch Screen Control

Projector

A projector can be used in a variety of applications, both portable and installed. The size of the room and the size of the screen as well as the overall light level in the room will dictate the size of projector needed. The higher the room's light level, the higher the output brightness of the projector should be. Most projectors have multiple inputs for laptops, cameras, or a video switcher.



Projector

Monitor

Monitors can range in size from a small desktop preview monitor of around 21" to large format 85" or even 98" and are usually wall-mounted with either a tilt or fully articulated mount. Ceiling mounts are sometimes used depending on building construction and placement.

Switchers & Network Video

Network video devices are taking over the role of a typical A/V switch. Network video does not have the same cabling and physical location constraints as devices can be placed anywhere on the network and video either injected or received from the network. This provides a great level of scalability as systems are no longer bound by a fixed frame.